



greenform

CATALOG

2026

MODERN PLANTERS



+ SITE FURNISHINGS

Built with a regard for the natural landscape, sustainability, and the enduring appeal of pure architectural form, Greenform has created a reputation for designing products that suit interior and exterior living spaces.

We believe that well-considered form enhances our environment, and take pride in crafting sculptural planters and furnishings that provide a distinctive look for commercial, hospitality, and residential projects. We are a privately owned company that relies on a thoughtful blend of highly skilled craftsmanship and technological acumen to be not only a great source for design, but also a reliable source for landscape and interior architecture solutions.

Our products are made of natural, durable, recyclable, lightweight fiber cement. We manufacture in Europe, and each product is hand formed and signed by individual artisans. Greenform offers the best of modern design in a timeless and enduring material.

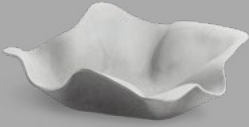
SUSTAINABLE



← **kyoto** · anthracite · 35" x 28"

↓ **sumo** · gray · 14" x 18" · 18" x 22"





biasca • 1 size



bonsai • 2 sizes



delta square • 7 sizes



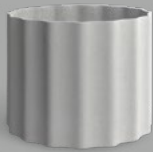
delta rectangle • 11 sizes



delta round • 5 sizes



geisha • 1 size



kolonna • 3 sizes



kyoto • 6 sizes



kyoto low • 5 sizes



lausanne • 2 sizes



maia • 3 sizes



osaka • 5 sizes



osaka low • 4 sizes



ronco • 2 sizes



samurai • 1 size



spindel • 2 sizes



sumo • 2 sizes



tower 33 • 1 size



tower 66 • 1 size

biasca



diameter	length	width	height	weight	volume	anthracite	gray	white
—	37"	37"	13"	32 lb.	8 gal.	8051139	8011802	9011802

bonsai



diameter	length	width	height	weight	volume	anthracite	gray	white
44"	—	—	16"	84 lb.	92 gal.	8046522	8047764	9047764
54"	—	—	20"	110 lb.	164 gal.	8046523	8047943	9047943



delta square



diameter	length	width	height	weight	volume	anthracite	gray	white
—	18"	18"	18"	41 lb.	21 gal.	8029350	8011874	9011874
—	24"	24"	18"	60 lb.	32 gal.	8029278	8011877	9011877
—	31"	31"	18"	84 lb.	69 gal.	8029590	8011880	9011880
—	39"	39"	18"	117 lb.	111 gal.	8029783	8011857	9011857
—	24"	24"	24"	77 lb.	48 gal.	8042497	8043606	9043606
—	31"	31"	24"	101 lb.	85 gal.	8049320	8024164	9024164
—	39"	39"	24"	144 lb.	151 gal.	8029414	8012071	9012071



delta rectangle



diameter	length	width	height	weight	volume	anthracite	gray	white
—	31"	12"	14"	42 lb.	17 gal.	8029591	8011853	9011853
—	39"	12"	14"	52 lb.	22 gal.	8029647	8011856	9011856
—	24"	18"	18"	51 lb.	29 gal.	8028312	8011859	9011859
—	31"	18"	18"	64 lb.	37 gal.	8028300	8011861	9011861
—	39"	18"	18"	73 lb.	48 gal.	8028301	8011865	9011865
—	47"	18"	18"	84 lb.	53 gal.	8028302	8011870	9011870
—	55"	18"	18"	99 lb.	69 gal.	8028303	8011872	9011872
—	31"	22"	24"	88 lb.	70 gal.	8028304	8012083	9012083
—	39"	22"	24"	101 lb.	87 gal.	8028305	8011869	9011869
—	47"	22"	24"	116 lb.	105 gal.	8028306	8012079	9012079
—	55"	22"	24"	133 lb.	116 gal.	8028307	8012081	9012081



delta round



diameter	length	width	height	weight	volume	anthracite	gray	white
20"	—	—	18"	36 lb.	23 gal.	8029784	8011876	9011876
30"	—	—	18"	61 lb.	49 gal.	8029785	8011879	9011879
39"	—	—	18"	93 lb.	87 gal.	8029786	8011858	9011858
30"	—	—	24"	73 lb.	70 gal.	8029078	8018546	9018546
39"	—	—	24"	100 lb.	124 gal.	8081917	8081916	9081916



geisha

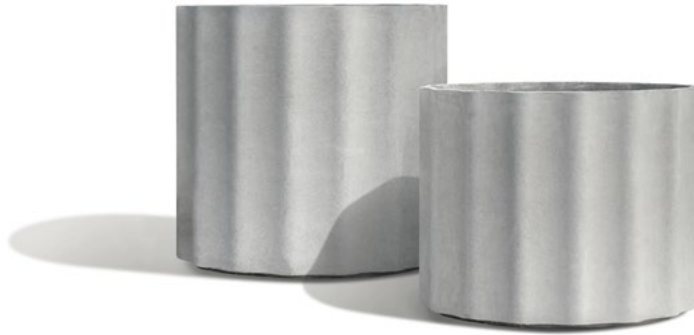


diameter	length	width	height	weight	volume	anthracite	gray	white
17"	—	—	26"	29 lb.	22 gal.	8032288	8042369	9042369

kolonna



diameter	length	width	height	weight	volume	anthracite	gray	white
24"	—	—	20"	35 lb.	35 gal.	8068438	8068435	9068435
24"	—	—	24"	40 lb.	42 gal.	8068439	8068436	9068436
32"	—	—	28"	77 lb.	88 gal.	8068440	8068437	9068437



kyoto



diameter	length	width	height	weight	volume	anthracite	gray	white
14"	—	—	14"	13 lb.	6 gal.	8028326	8034611	9034611
17"	—	—	17"	18 lb.	13 gal.	8028327	8029357	9029357
21"	—	—	22"	30 lb.	24 gal.	8028328	8032048	9032048
28"	—	—	21"	44 lb.	42 gal.	8032291	8037765	9037765
35"	—	—	28"	117 lb.	106 gal.	8038492	8038491	9038491
47"	—	—	36"	194 lb.	250 gal.	8051194	8051196	9051196



kyoto low



diameter	length	width	height	weight	volume	anthracite	gray	white
17"	—	—	14"	15 lb.	10 gal.	8053716	8053715	9053715
21"	—	—	16"	28 lb.	18 gal.	8053718	8053717	9053717
28"	—	—	18"	39 lb.	39 gal.	8053733	8053732	9053732
35"	—	—	20"	101 lb.	74 gal.	8053727	8053731	9053731
47"	—	—	26"	176 lb.	171 gal.	8056589	8056588	9056588

lausanne



diameter	length	width	height	weight	volume	anthracite	gray	white
28"	—	—	9"	22 lb.	17 gal.	8029399	8011796	9011796
35"	—	—	12"	44 lb.	32 gal.	8029790	8011800	9011800



maia



diameter	length	width	height	weight	volume	anthracite	gray	white
14"	—	—	12"	13 lb.	5 gal.	8090099	8090100	9090100
18"	—	—	16"	26 lb.	13 gal.	8087153	8087154	9087154
23"	—	—	20"	33 lb.	25 gal.	8076751	8076750	9076750

NEW

osaka



diameter	length	width	height	weight	volume	anthracite	gray	white
—	14"	14"	14"	15 lb.	8 gal.	8028334	8043903	9043903
—	17"	17"	17"	21 lb.	16 gal.	8028335	8043902	9043902
—	21"	21"	22"	34 lb.	28 gal.	8028336	8043607	9043607
—	28"	28"	21"	60 lb.	48 gal.	8032293	8043608	9043608
—	35"	35"	28"	132 lb.	127 gal.	8038493	8049670	9049670



osaka low



diameter	length	width	height	weight	volume	anthracite	gray	white
—	17"	17"	14"	18 lb.	13 gal.	8053804	8053805	9053805
—	21"	21"	16"	31 lb.	18 gal.	8053809	8053810	9053810
—	28"	28"	18"	52 lb.	39 gal.	8053799	8053801	9053801
—	35"	35"	20"	110 lb.	74 gal.	8053767	8053766	9053766

ronco



diameter	length	width	height	weight	volume	anthracite	gray	white
17"/23"	—	—	18"	30 lb.	18 gal.	8065982	8063241	9063241
21"/28"	—	—	21"	48 lb.	39 gal.	8065983	8063242	9063242



samurai



diameter	length	width	height	weight	volume	anthracite	gray	white
—	17"	17"	26"	35 lb.	25 gal.	8032294	8042739	9042739

spindel



diameter	length	width	height	weight	volume	anthracite	gray	white
15"	—	—	24"	14 lb.	2 gal.	8042500	8011793	9011793
22"	—	—	36"	31 lb.	5 gal.	8031209	8011801	9011801

sumo



diameter	length	width	height	weight	volume	anthracite	gray	white
14"/18"	—	—	16"	18 lb.	11 gal.	8028351	8038640	9038640
18"/22"	—	—	20"	31 lb.	20 gal.	8028352	8047946	9047946



tower 33

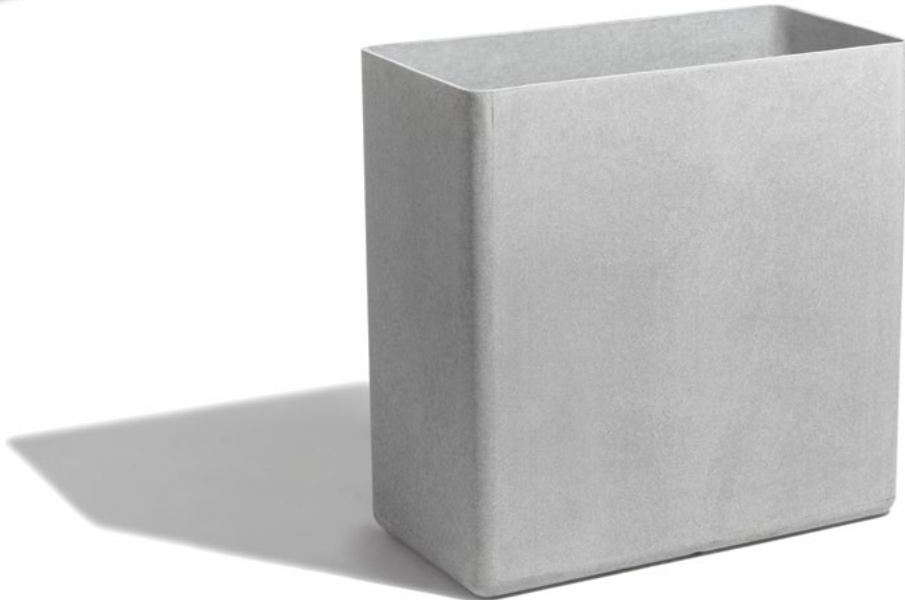


diameter	length	width	height	weight	volume	anthracite	gray	white
—	13"	13"	26"	26 lb.	15 gal.	8061834	8061833	9061833

tower 66



diameter	length	width	height	weight	volume	anthracite	gray	white
—	26"	13"	26"	45 lb.	30 gal.	8061832	8061831	9061831



tray round



diameter	length	width	height	weight	volume	anthracite	gray	white
12"	—	—	2"	2 lb.	—	8032297	8011732	9011732
14"	—	—	2"	3 lb.	—	8032298	8011736	9011736
16"	—	—	2"	4 lb.	—	8032300	8011745	9011745
18"	—	—	2"	5 lb.	—	8032302	8011755	9011755
20"	—	—	2"	5 lb.	—	8032304	8011758	9011758
24"	—	—	2"	6 lb.	—	8032306	8049351	9049351

tray square



diameter	length	width	height	weight	volume	anthracite	gray	white
—	12"	12"	2"	3 lb.	—	8032307	8032308	9032308
—	14"	14"	2"	4 lb.	—	8012853	8011740	9011740
—	16"	16"	2"	4 lb.	—	8032309	8011749	9011749
—	18"	18"	2"	5 lb.	—	8032310	8050521	9050521
—	24"	24"	2"	7 lb.	—	8032311	8042846	9042846

↓ willy guhl · gray · 31" x 21" x 24"

DURABLE





birdy



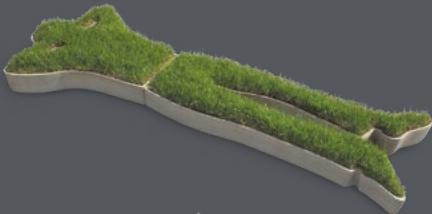
ecal



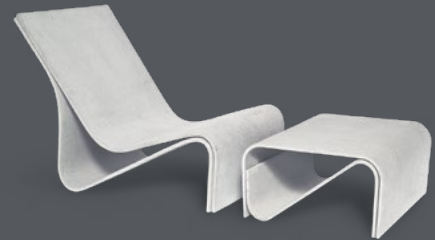
muneli



porto



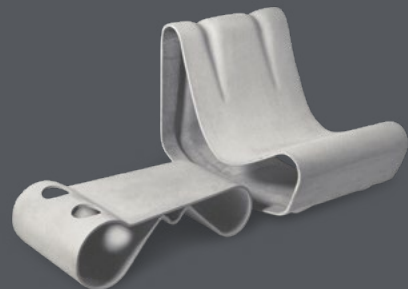
relax



sponeck



trash cube



willy guhl

birdy



	length	width	height	weight	anthracite	gray	white
	8"	6"	9"	3 lb.	8038518	8038517	9038517

ecal



	length	width	height	weight	anthracite	gray	white
stool	17"	13"	17"	21 lb.	8038530	8038529	9038529
table	28"	19"	11"	33 lb.	8038533	8038532	9038532



muneli



	length	width	height	weight	anthracite	gray	white
	52"	42"	5"	36 lb.	8065212	8045729	9045729

porto



	diameter	width	height	weight	anthracite	gray	white
stool	14"	—	17"	14 lb.	8065992	8065996	9065996
table sm	18"	—	9"	14 lb.	8065991	8065995	9065995
table lg	28"	—	9"	30 lb.	8065990	8065994	9065994

relax



	length	width	height	weight	anthracite	gray	white
	74"	30"	5"	45 lb.	8030933	8030932	9030932

sponeck



	length	width	height	weight	anthracite	gray	white
chair	31"	20"	24"	65lb.	8067422	8038504	9038504
table	20"	20"	10"	35 lb.	8067423	8038497	9038497
cover	18"	34"	—	—	anthracite anthracite/red red lemongrass		



trash cube



	length	width	height	weight	anthracite	gray	white
	12"	12"	14"	100 lb	—	8045730	—

willy guhl



	length	width	height	weight	anthracite	gray	white
chair	31"	21"	24"	51 lb.	8067544	8027659	9027659
table	28"	16"	9"	26 lb.	8067545	8018800	9018800



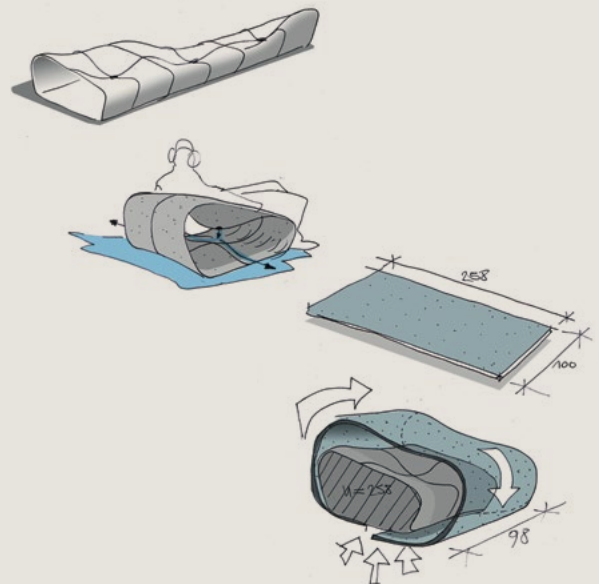
Rainer Mutsch, Product Designer

We often speak of Greenform's commitment to providing individually hand-crafted pieces. For a glance behind the scenes, we invite you to meet Rainer Mutsch, one of the designers creating our product.



Connecting to the Material

"To quote the Swiss designer Willy Guhl (1915–2004), 'there is no *good* or *bad* material, what makes the difference is its right and adequate use.' My designs are in general material driven. Before I start with the first sketch I love to take my time and visit the production facilities, talk to the workers about the material's advantages and disadvantages and learn about its history."



Working Through Design Challenges

"For Dune my goal was to create a piece of furniture made out of one entire fiber cement plate with practically no offcuts. A lot of research and many prototypes were necessary to get the maximum stability out of the fiber cement. Eventually, the geometry of the chair supported its stability through the controlled expansion and compression of the material. Dune combines maximum stability with minimal material thickness."

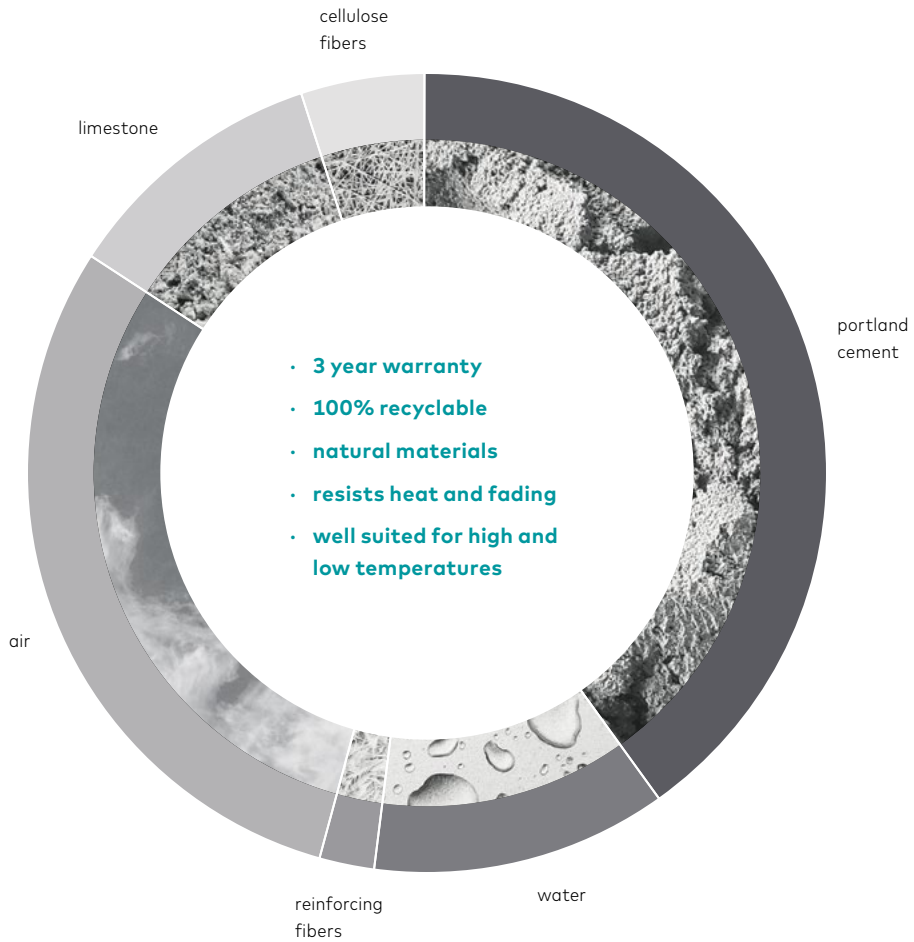




From Europe to California

Greenform takes pride in being the sole U.S. provider of containers created from lightweight fiber cement. Noted for its natural, durable and recyclable traits, fiber cement is an enduring and versatile material suitable for hot and cold climates. Greenform's showroom and FOB point is in Los Angeles, California.





What is Fiber Cement?

Fiber Cement is a mixture of Portland cement, reinforcing fibers, air, and water. Initially moldable, the material slowly solidifies into a water and humidity resistant form.

portland cement • 40%

The binding material is Swiss Portland cement, produced with sintered limestone and marly clay. Portland cement is the main component in all Greenform fiber cement products.

water • 12%

The water content remains within the fiber cement panel for a long time and contributes to the continuing strengthening (hydration) of the cement stone.

reinforcing fibers • 2%

Reinforcing fibers are synthetic and organic fibers made of polyvinyl alcohol and modified for fiber cement application. Similar fibers are widely used in fabrics, tissues, and fleece.

air • 30%

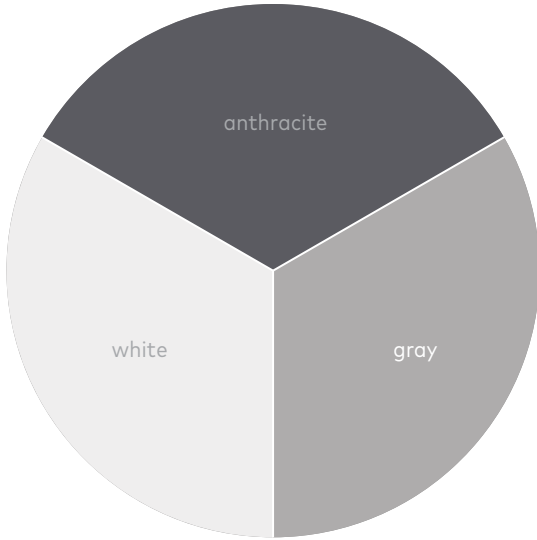
Microscopically small air pores serve as expansion chambers for freezing water and make the product frost proof. Fiber cement is a breathable material, while simultaneously being water and weather proof.

limestone • 11%

Inert additives improve certain characteristics of the fiber cement and optimize product quality.

cellulose fibers • 5%

Processing fibers serve as filters during the production process. They are mainly cellulose fibers widely used in the paper industry. Recycled waste paper is used to some extent.



Our base colors are anthracite, gray, and white.



Custom colors from the RAL series are made to order. Additional finishes and design options are available upon request.



↓ **samurai** · white · 17" x 17" x 26"

→ **osaka** · anthracite · 21" x 21" x 22"

cover **maia** · white · 14" x 12" · gray · 23" x 20"

back **delta round** · ral 2003 · 30" x 18" · ral 6019 · 30" x 24"





THE GREEN LIGHT

GREENFORM

- elegant design
- handmade
- quality craftsmanship
- durable
- lightweight
- easy installation

